



Life Orientation: Life Skills

NQF 2

TVET FIRST

NQF LEVEL

2

Third Edition

Student's Book

Life Orientation

Life Skills



A Thorne

Explain ethical behaviour at college & in your personal life

Module 12

2

[*see terms and conditions](#)

TVET FIRST NCV



Think about it...



- What would life be like without **any regard** for **ethics** & **morals**?
- How can study funds be **managed responsibly**?
- How can you know for sure what is **right** & **wrong** behaviour?

Unit 12.1

Ethical & moral behaviour

What is **ethical** & **moral** behaviour?

- Based on **moral principles**
- Good **values** & **standards**
- Not always law, but followed by people for a **peaceful existence.**



Forms of **unethical** behaviour

- Bending the **rules** & breaking the **law** (e.g. abusing alcohol, speeding, selling illegal goods)
- Spreading **gossip** & **rumours**



Figure 12.2: Illegal products include fake brand name sunglasses

Forms of **unethical** behaviour

- Being **dishonest**:
 - ❖ Lying
 - ❖ Cheating
 - ❖ Stealing
- Procrastinating,
wasting time &
wasting resources



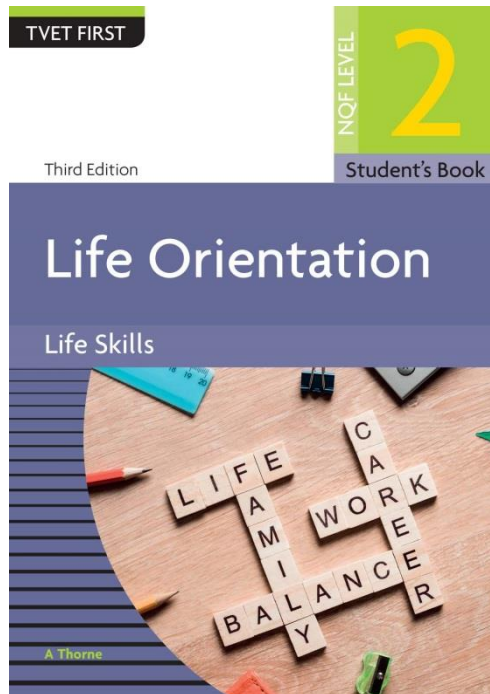
Figure 12.4: Shoplifting is a crime, regardless of whether the stolen item is a bar of soap, lipstick, book or TV set

Forms of **unethical** behaviour

- Some sexual relations
- Bribing and **intimidating** others
- Committing abuse or **violence**.



Forms of **unethical** behaviour



- Refer to **Examples 12.1 to 12.5** in your *Student's Book* for more information about unethical behaviour.



TVET FIRST



Click above to play this video.

NOF LEVEL

2

TVET FIRST NCV

TVET FIRST

NQF LEVEL

2

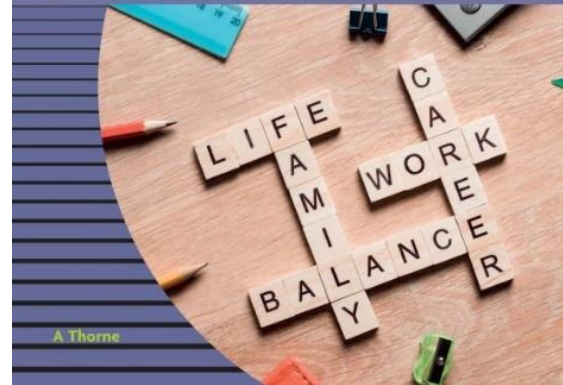


Third Edition

Student's Book

Life Orientation

Life Skills



A Thorne

Learning activity 12.1

Module 12

Test your knowledge of this unit by completing Learning activity 12.1 in your *Student's Book*.

NQF LEVEL

2

Unit 12.2

Responsibilities & duties regarding study funding

Sources of study funding

- **Bursaries:**
 - ❖ Money to **help pay** for studies
 - ❖ Based on **financial need** & **academic performance**
 - ❖ Paid by **companies, trust funds, charities & NGOs**
 - ❖ Not paid back **unless** the student **fails**.



Figure 12.8: Some bursaries pay the funds direct into the college on behalf of the student

Sources of **study funding**

- **Scholarships:**

- ❖ Type of **bursary**
- ❖ Based on **academic** or **sport performance**
- ❖ Conditions **to be met**.

- **Loans:**

- ❖ Offered by: **NSFAS, colleges & banks**
- ❖ Interest **payable**.

Sources of **study funding**

- **Study policies:**

- ❖ Savings **plan**

- ❖ Started when **children are young.**

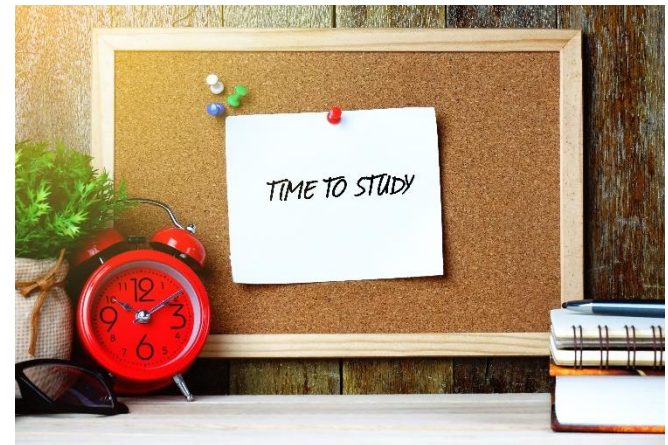
- **Awards:**

- ❖ Prize for **best student**

- ❖ Covers fees **for a year** or for **all years of study.**

Study funding – responsibilities & duties

- Meet **all requirements**
- Draw up a **budget**
- Aim for **good marks**
- Remember **why you are at college**
- Communicate.



TVET FIRST

NQF LEVEL

2

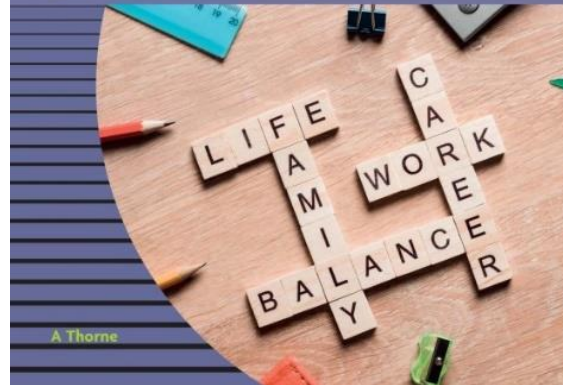


Third Edition

Student's Book

Life Orientation

Life Skills



A Thorne

Learning activity 12.2

Module 12

Test your knowledge of this section – and look at your budget – by completing Learning activity 12.2 in your *Student's Book*.

NQF LEVEL

2

Unit 12.3

Your own ethical values & behaviour at college

Your ethical values & behaviour

- Ethical choices need to be made **every day**.
- **Remember:**
 - ❖ Ethics = **moral correctness**
 - ❖ Values = **principles** that guide your **ethical & moral behaviour**; what is important
 - ❖ Moral behaviour = **acceptable actions**.

TVET FIRST

NQF LEVEL

2

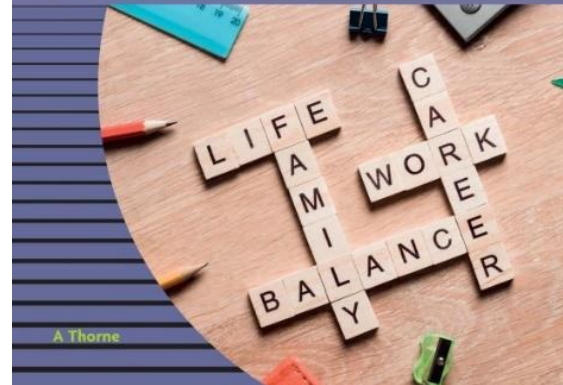


Third Edition

Student's Book

Life Orientation

Life Skills



A Thorne

Learning activity 12.3

Module 12

Test your knowledge of this section – and analyse your ethical values – by completing Learning activity 12.3 in your *Student's Book*.

NQF LEVEL

2

TVET FIRST

NQF LEVEL

2

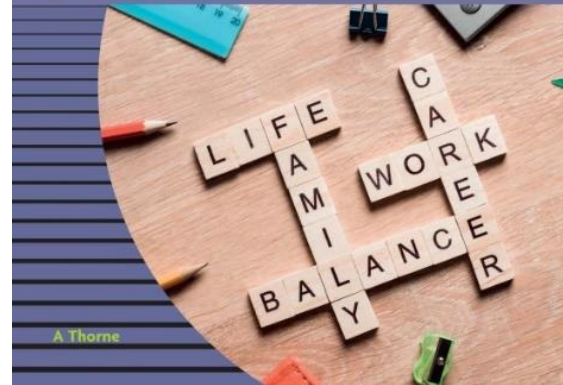


Third Edition

Student's Book

Life Orientation

Life Skills



A Thorne

Learning activity 12.4

Module 12

Test your knowledge of this unit – and interview a role model for ethical behaviour – by completing Learning activity 12.4 in your *Student's Book*.

NQF LEVEL

2

TVET FIRST

NQF LEVEL

2



Third Edition

Student's Book

Life Orientation

Life Skills



A Thorne

Summative assessment

Module 12

Test your knowledge of this module by completing the Summative assessment of Module 12 in your *Student's Book*.

NQF LEVEL

2



Terms and conditions

**These PowerPoint slides are a tool for lecturers,
and as such:**

**YOU MAY add content to the slides, delete content from the slides,
print out the slides, and save the slides onto your computer or
server.**

**YOU MAY NOT resell, reproduce or redistribute the content in any
form whatsoever, without prior written permission from the
copyright holder.**

© Troupant Publishers (Pty) Ltd, 2017

Selected images used under licence from Shutterstock.com

2